

Installation (for installation personnel)

⚠ Warning

Carefully read the "Before Installation" and "About Installation and Operation" sections of the manual concerning installation and operation. Then install the product properly and safely. Installation in an unsuitable location or improper installation can result in the product falling from its position or damage to the vehicle.

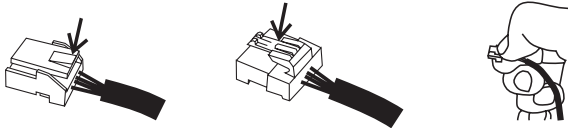
⚠ Caution

When installing the display, be sure to follow the instructions for Defi-Link Control Unit II(or Defi-Link Control Unit).

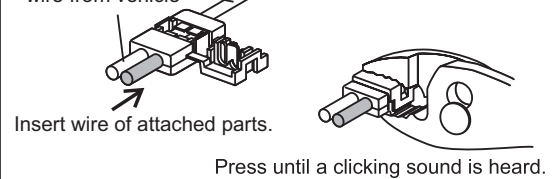
STEP 1 Wiring

⚠ Caution

Do not pull the wires out of connectors forcefully. The connectors and the wires may be broken. When pulling out the wires, press the lock firmly and unclip the locks of connectors.



How to branch signal wire using solderless connector wire from vehicle



[A-1] Power supply wire (2 1/2ft, 75cm)

- Red: Battery (To 12V battery wire)
- Orange: IGN (To 12V wire when ignition on)
- Black: GND (To ground, negative battery terminal)
- White: +ILM (To 12V wire when small light on)

When this product is used without a connection to the Defi-Link System, the white wire is not necessary to be connected. Insulate it.

5Pins (1pin is vacant.)

[A-2] Speed & tacho signal wire (6 3/5ft, 2m)

- Green: Speed signal
- Blue: Tacho signal

Engine computer unit (ECU) or ignition primary coil

When connected to Defi-Link System, do not connect the blue wire but insulate it.

2Pins

[A-3] Tachometer signal wire (4 3/5ft, 2m)

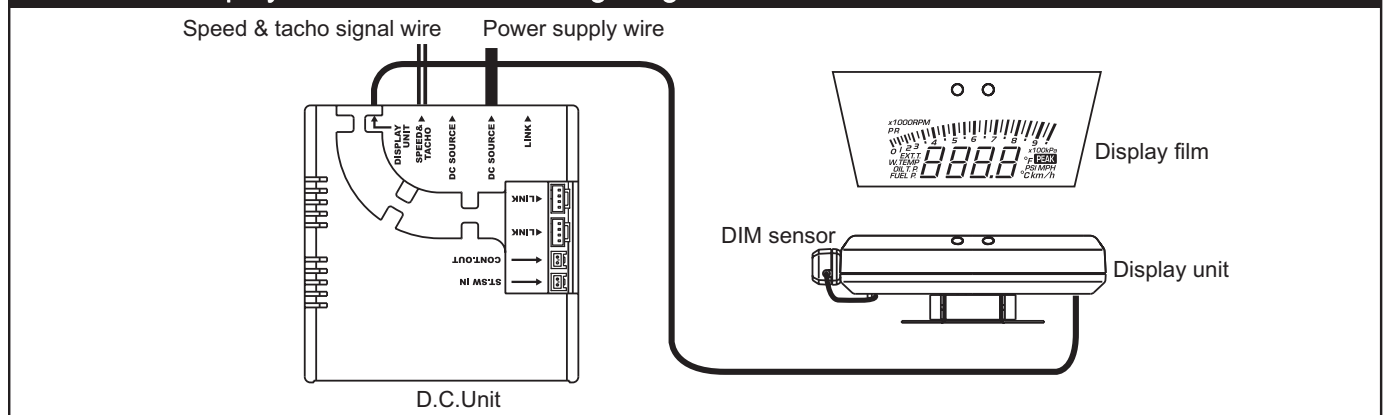
- Blue: Tacho signal

Engine computer unit (ECU) or ignition primary coil

2Pins (1Pin is vacant.)

When the Defi-Link Display VSD CONCEPT is used WITHOUT a connection to the Defi-Link System

Defi-Link Display VSD CONCEPT Wiring Diagram



- 1 : Connect the power supply wire to the wiring of vehicle.(A-1)
- 2 : Connect the other side of the power supply wire to DC SOURCE of D.C.Unit.
There are two DC SOURCE connectors. Both connectors are usable.
- 3 : Connect the speed & tacho signal wire (green & blue wires) to speed and tacho signal wire of the engine computer unit (ECU) with solderless connectors.(A-2)
- 4 : Connect the other side of the speed & tacho signal wire to SPEED&TACHO of D.C.Unit.
In the case where this product is connected to Defi-Link System afterward, connect the white wire of the power supply wire to the illumination wire (12V wire when small lamp is on) and then connect the tacho signal wire to Defi-Link Control Unit II (or Defi-Link Control Unit).

STEP 2 Check Wiring

- 1 : Connect the display wire of Defi-Link Display VSD CONCEPT to DISPLAY UNIT of D.C.Unit.
- 2 : Check that all the wires are properly connected.
- 3 : Turn on the ignition of vehicle and make sure the display is lighted. (The display looks inverted on the display unit.)
- 4 : If the display is lighted, go to the next step. If not, go back to STEP1(WIRING) and rewire.

STEP 3 Applying the Display Film

Warning

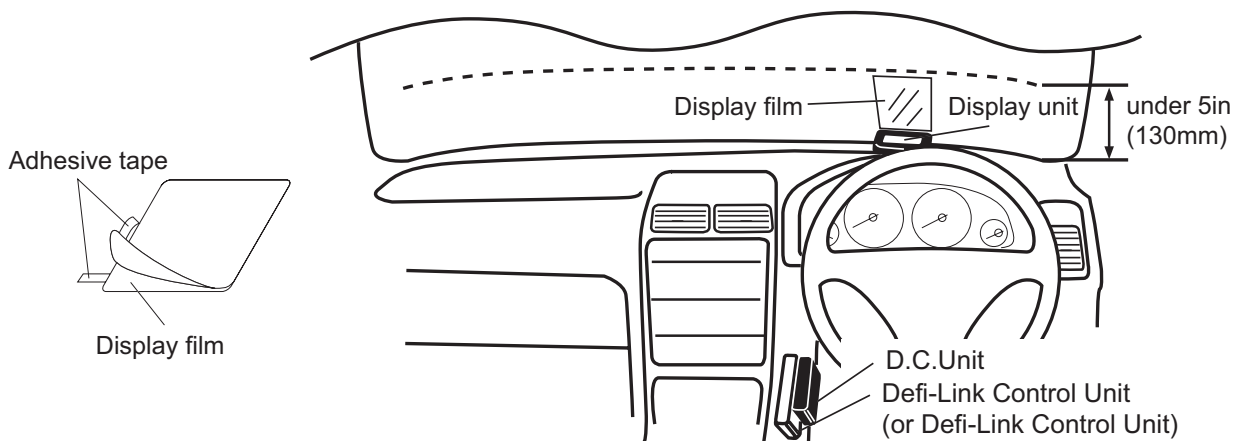
Display must be projected on the bottom 5in(130mm) of the windshield. Consult with customer about the place of display projection. Attach the display unit in a location which will not hinder driving. Comply with the law concerning vehicle safety in your district.

The display is viewable even without the display film. The transmittance of the display film is about 45%. We are not responsible for any damage or problems arising from the use of the display film applied on the windshield. Please follow the local regulations as for attaching the display film.

- 1 : Wipe off tarnish and stain on the windshield.
- 2 : Position the display unit and the display film in place. Mark a corner of display film with adhesive tape.
- 3 : Separate the display film from the backing paper using adhesive tape as shown in the following figure.
- 4 : Spray a mixture of water(150ml:5oz) and mild detergent(1 or 2drops) on the windshield and the display film. Attach the film to the windshield in a longitudinal direction.

Dismount the display unit for a time to protect it from getting wet. Spread a towel on the instrument panel.

- 5 : Gently squeeze out water and air bubbles under the film using a spatula. Wipe extra water with tissue.



Do not expose D.C.Unit and Defi-Link Control Unit II(or Defi-Link Control Unit) to direct sunlight.

STEP 4 Installation of Display Unit and DIM Sensor

⚠ Warning

- Improper installation could cause the product to fall and damage the vehicle or cause serious danger by impeding driving.
- Attach the display unit in a location which will not hinder driving.
 - Make sure that both the display unit and D.C.Unit are firmly attached.

Confirmation

When leaving car under the direct sunlight, cover the display unit with a white cloth. It prevents the unit from deterioration. Before attaching units using double-sided tape, make sure they are clean.

1 : Tighten temporarily the bracket A and the display unit using a Phillips screwdriver and adjust the rotative direction.(B- 1)

Bracket A can be attached to the display unit in any direction(upside down, front/back). Determine the location of the display unit where the display is the most clearly projected on the windshield.

2 : Tighten temporarily Bracket B and the display unit to adjust the angle using an Allen wrench.(B-2)

3 : Identify the location and angle the display unit on the instrument panel. Then fully tighten Bracket A where the display is clearly projected on the windshield.

4 : Connect the DIM sensor to the connector on the backside of display unit.

5 : Dismount the display unit from Bracket B. Attach Bracket B on the instrument panel using double-sided tape. Bend Bracket B fitting to the form of instrument panel. Set Bracket B using sheet-metal screws(commercially available).

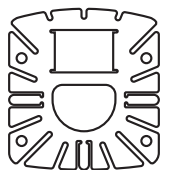
6 : Fit the display unit into Bracket B and fully tighten.

7 : Attach the DIM sensor to the side of display unit towards the direction of movement using double-sided tape.(B- 3)

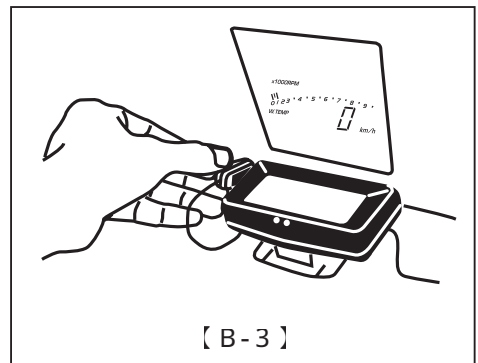
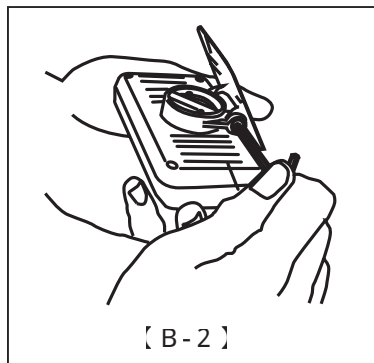
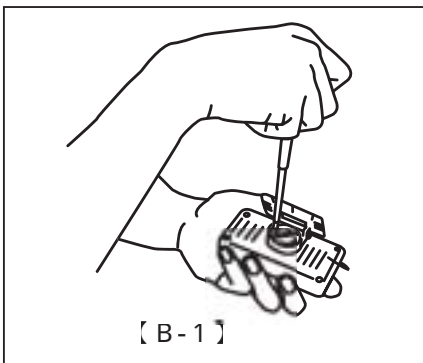
To perceive the anterior brightness, the sensor must not be interrupted by wipers and things.



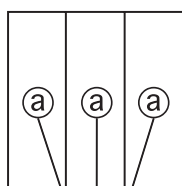
Bracket A



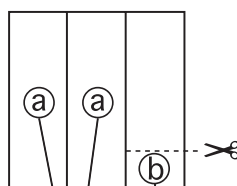
Bracket B



Use double-sided tape as follows:

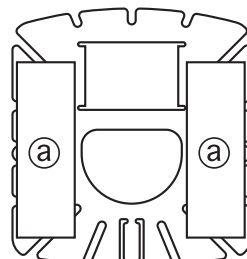


D.C.Unit



Bracket B

DIM sensor



Bracket B



DIM sensor

After the installation is done, the next step is the set-up of functions. Please refer to the backside of this manual. The quick reference chart for the set-up is printed on the inside of the package.

Trouble Shooting(for customer and installation personnel)

Warning

If operation of the product seems unusual, inspect the product to confirm that there is no malfunction. If an operational problem has occurred, it could result in an accident.

In addition to a general inspection of the product, use the following table to confirm proper operation of the unit. If the operational problem does not appear in the following table, contact the installation personnel.

Condition	Possible Cause	Corrective Action
Does not display.	Wiring of the power supply wire or the display wire is improper.	Check wiring as per instructions in this manual.
The engine speed is not displayed correctly.	Wiring of the tachometer signal wire is wrong. Setting of the number of cylinders is wrong(D.C.Unit/Defi-Link Control Unit II/Defi-Link Control Unit). LINK of D.C.Unit and METER OUTPUT2 of Defi-Link Control Unit II are connected. The tachometer signal wire is not connected to Defi-Link Control Unit II or Defi-Link Control Unit (in the case that the product is connected to the Defi-Link System).	Check wiring as per instructions in this manual. Check the number of cylinders as per instructions in this manual, Defi-Link Control Unit II manual, or Defi-Link Control Unit manual. Connect LINK of D.C.Unit and METER OUTPUT1 of Defi-Link Control Unit II using the meter wire. Connect the tachometer signal wire to Defi-Link Control Unit II(or Defi-Link Control Unit).
The speed is not displayed correctly.	Wiring of the speed signal wire is wrong. Setting of the speed pulse is wrong.	Check wiring as per instructions in this manual. Check the speed pulse as per instructions in this manual.
The auto dimmer mode is on, but the display is dark or the brightness of the display doesn't change.	The DIM sensor is not connected. The front of the DIM sensor is obstructed. The manual dimmer mode is selected in the setting of the illumination control.	Connect the DIM sensor as per instructions in this manual. Attach the DIM sensor in a position without any obstruction which interrupts the front of the sensor. Reset the illumination control setting as per instructions in this manual.
Does not carry out the closing mode.	The wiring of the red line of the power supply wire is wrong.	Check wiring as per instructions in this manual.
The product is connected to the Defi-Link System, but the speed is not recorded.	The REC button is pressed when the vehicle is stopped.	Press the REC button when the vehicle is moving.
Switching of the unit illumination is not interlocked with switching of the vehicle illumination.	The condition is normal.	Switching of D.C.Unit illumination is interlocked with turning on/off the ignition.